

Windows Server 2016 Setup Guide



Content

Windows Server 2016 Installation 2

Windows Server 2016 Essentials Edition 7

Driver & Software Installation 8

WASAPI 9

DAC/DDC Drivers 10

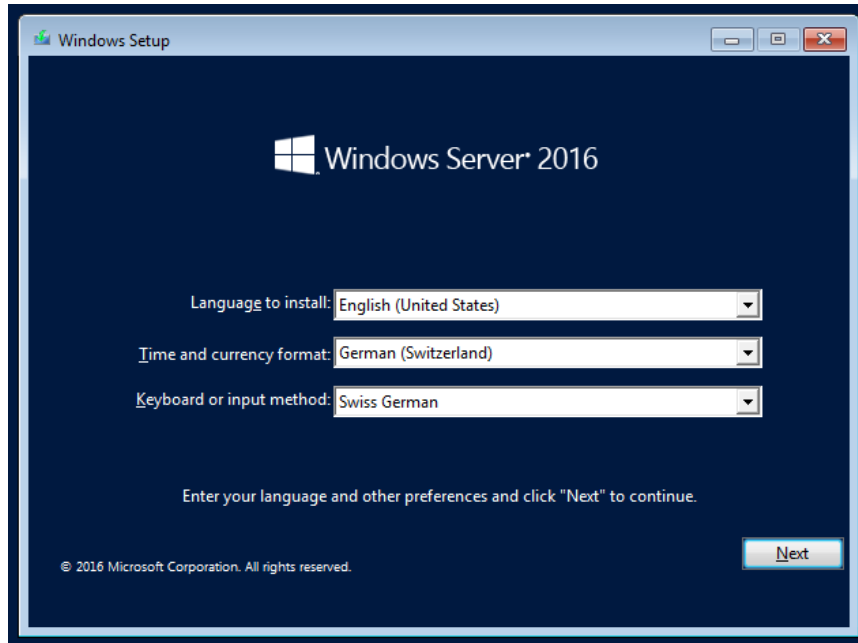
Converting Evaluation to Retail Edition 11

OS Activation 11

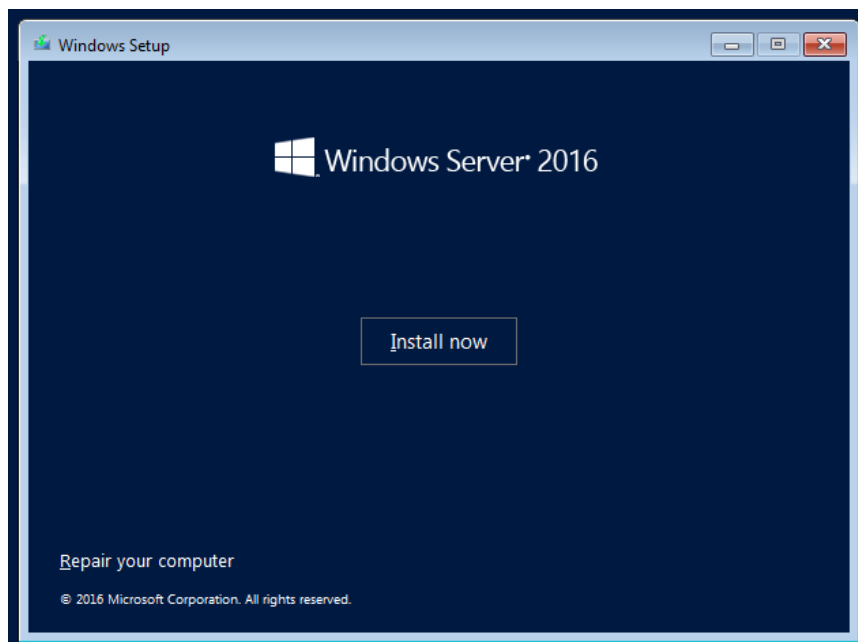
Highend-AudioPC Shop 12

Windows Server 2016 Installation

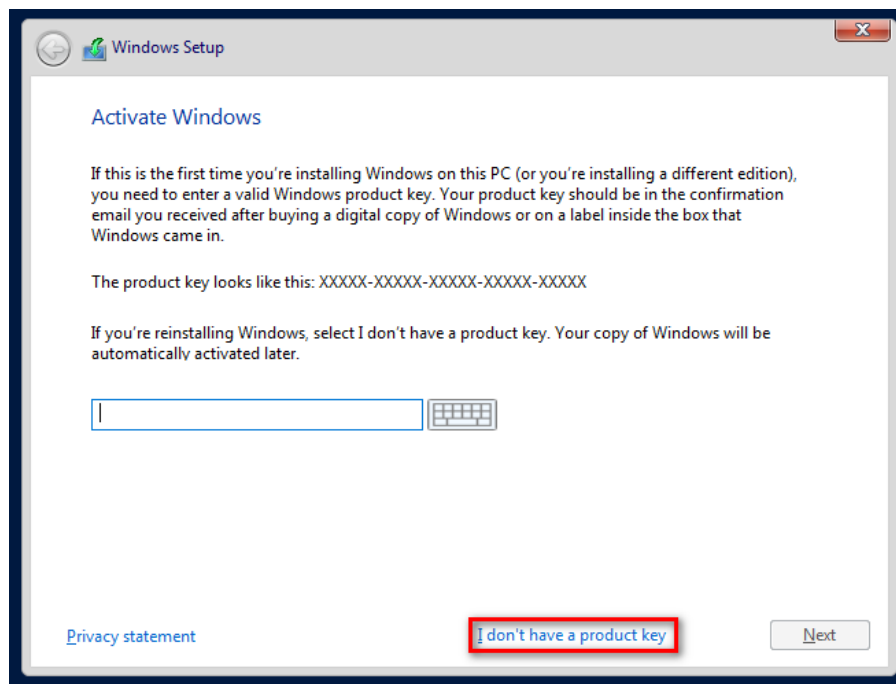
Boot your Windows Server 2016 USB Stick or your DVD. Choose the appropriate settings and go on. Setup will be familiar as it will be similar to a normal Windows installation.



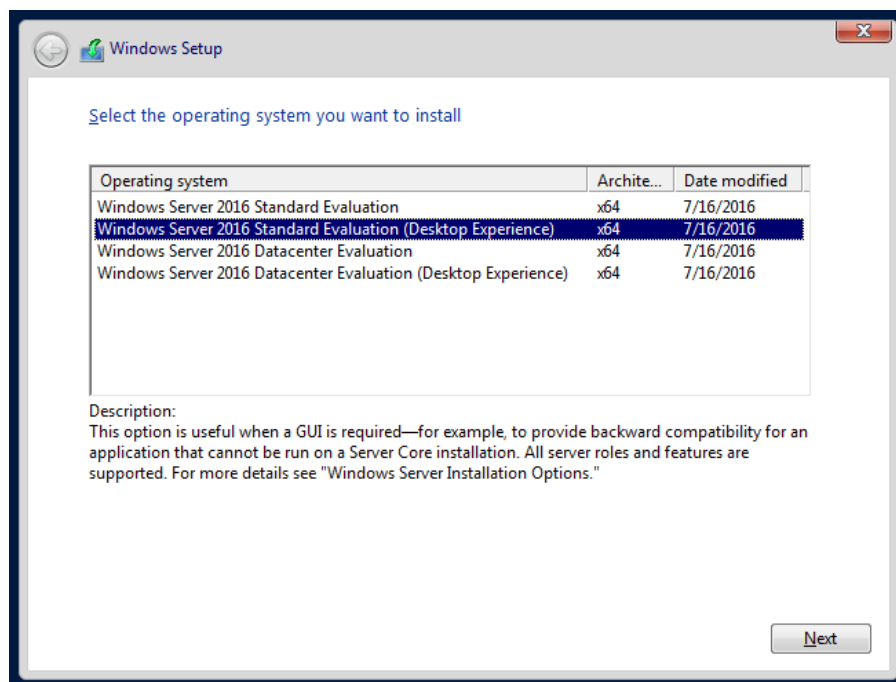
Click on the "Install now" button.



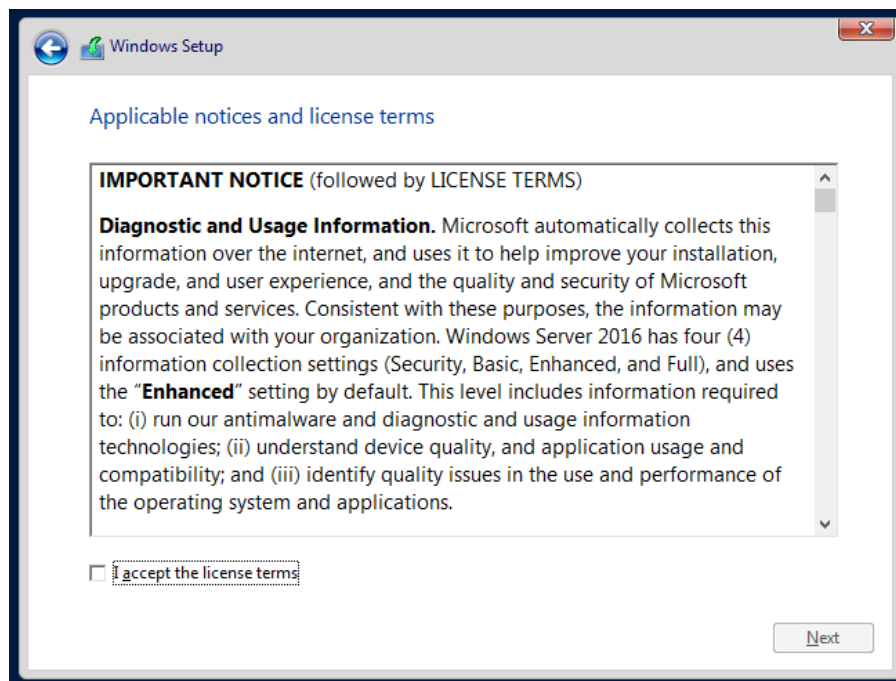
If you do not have a product key simply click on “I don’t have a product key” to continue the installation.



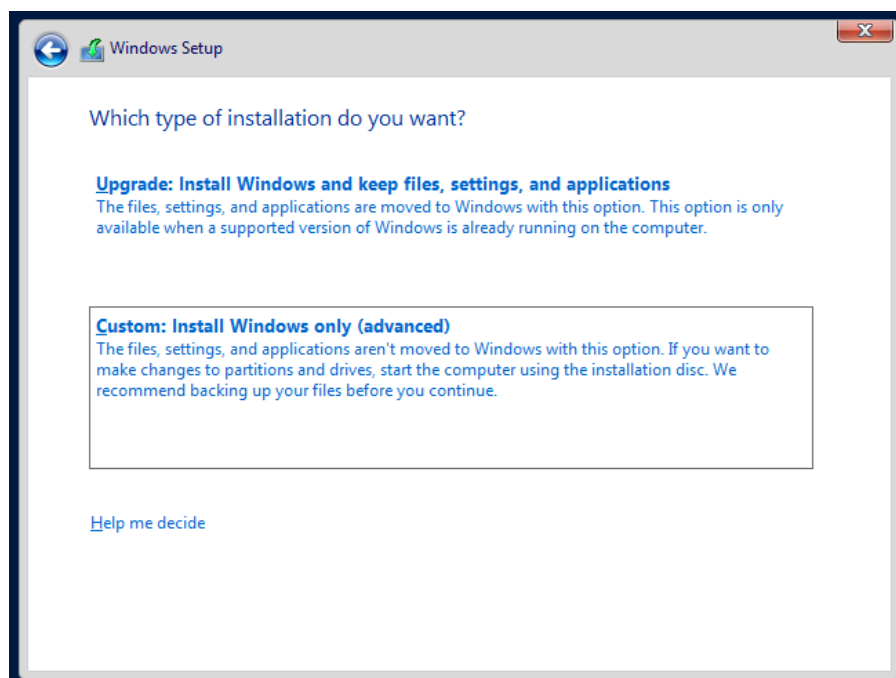
We highly recommend to install the Standard GUI (Desktop Experience) version of Windows Server 2016 in most of the cases. It results in a GUI installation with the same sound quality as Windows Server 2012 R2 in core mode, but without the associated hassle of core mode.



Accept License terms and click next.

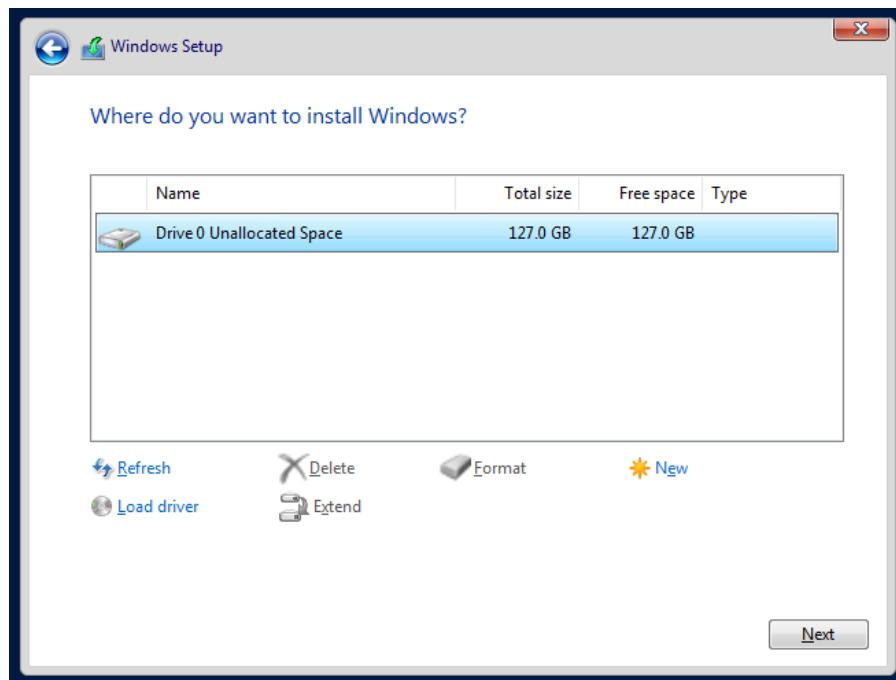


Choose Custom: Install Windows only (advanced)

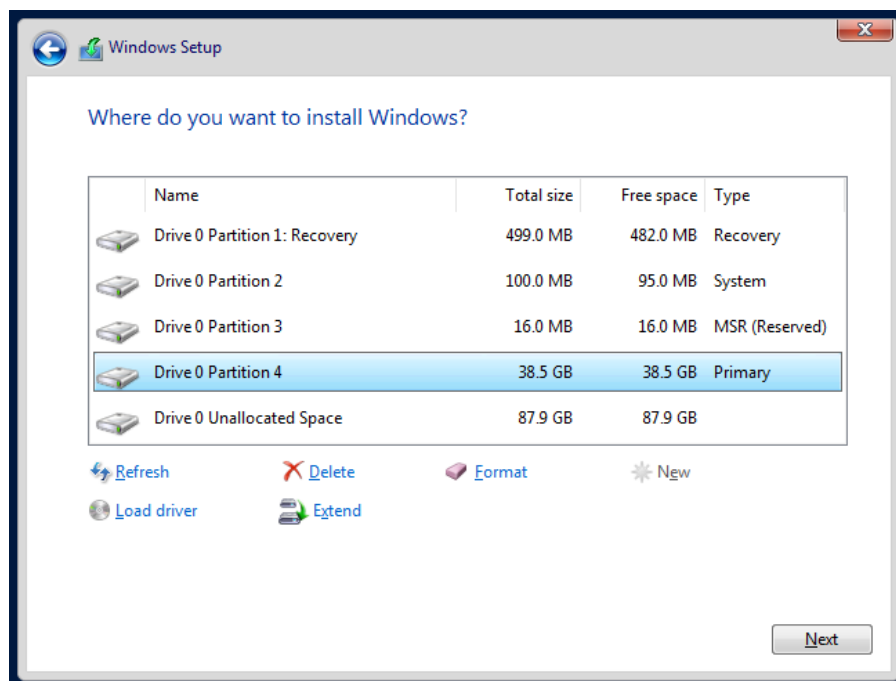


ATTENTION: It is also possible to upgrade an existing installation, but this is absolutely not recommended. Let's go on and create the partition according to your needs.

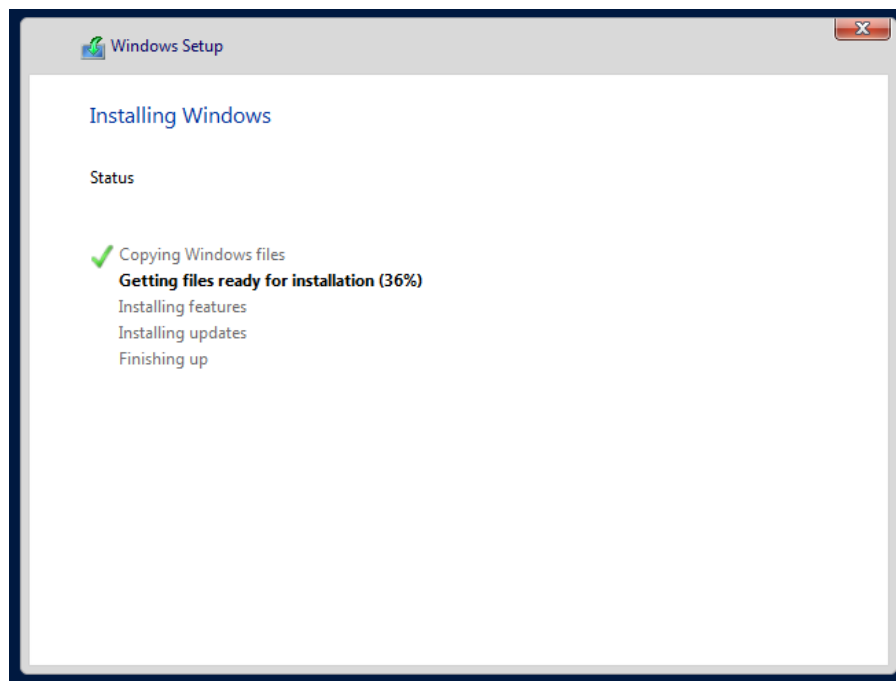
Click on “New” to create the primary partition for your Windows installation.



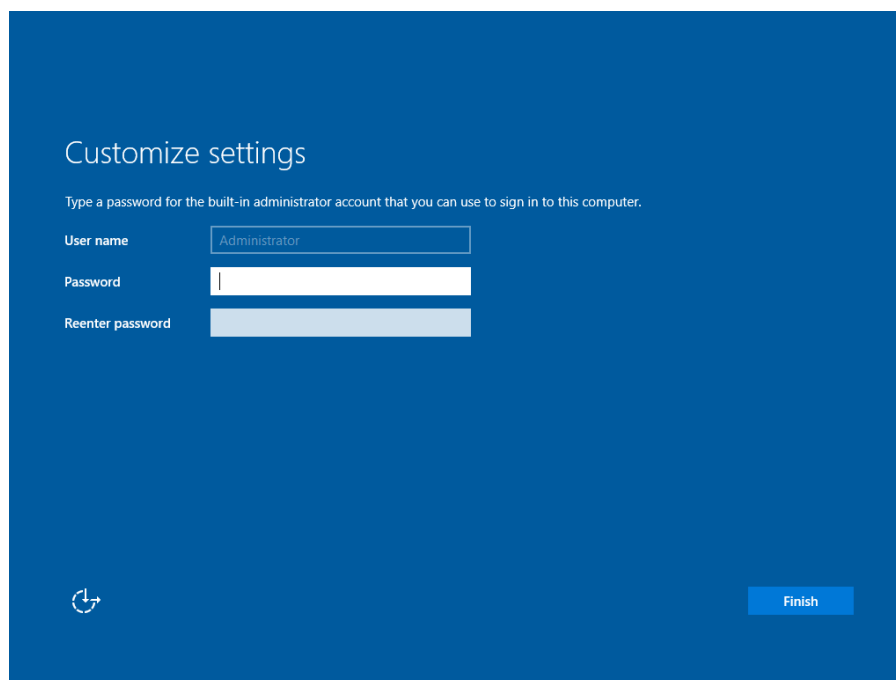
ATTENTION: All other automatically created partitions are normal and mandatory, do not delete them. Select the “Primary” partition you just created to install Windows Server 2016. If you have left over some “Unallocated Space” you can create a second partition right away or later on, either way this is optional.



That's it, Windows is now going to be installed and will be ready within a few minutes.



After the installation was successfully completed you have to set a password. Your password has to contain small and capital letters as well as numbers and at least one special character.

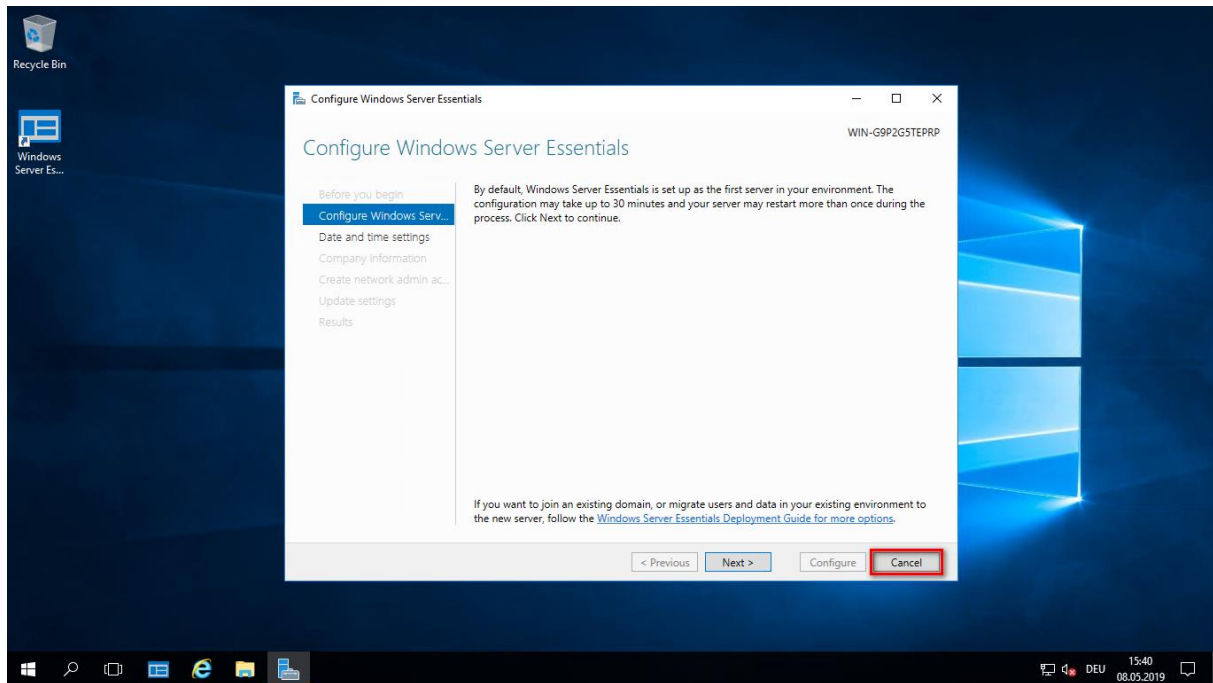


If you are using the Trial/Evaluation Edition of Server 2016, you need an active internet connection for the System to activate itself online. If the system cannot activate itself online, it will not run for the full trial period and will start shutting down the machine automatically if idle.

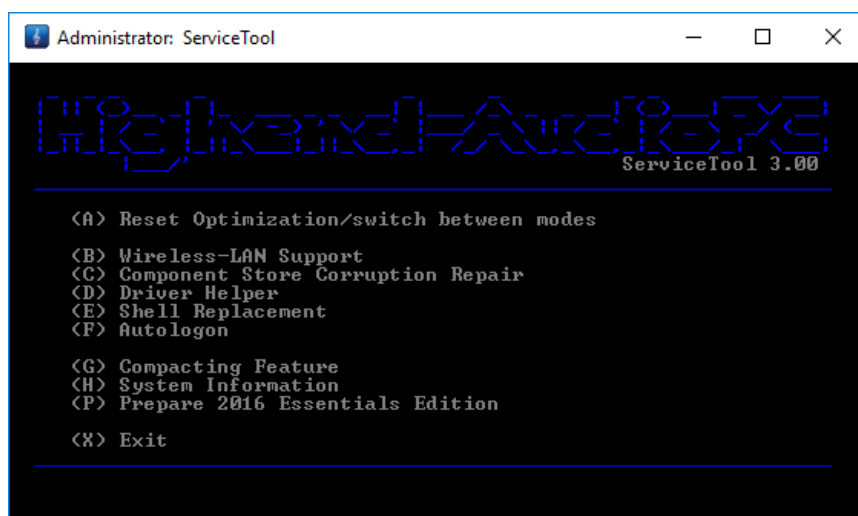
Windows Server 2016 Essentials Edition

You can skip this chapter if you don't use Windows Server 2016 Essentials Edition. Windows Server 2016 Essentials Edition needs some special preparation before you can achieve the best possible sound quality. Right after the first logon you will see a configuration wizard:

DON'T START THE CONFIGURATION WIZARD, CANCEL IT IMMEDIATELY!



Install the AudiophileOptimizer package (setup.exe) according to the installation instructions found in this manual. Then run ServiceTool and select "P" to prepare 2016 Essentials Edition.



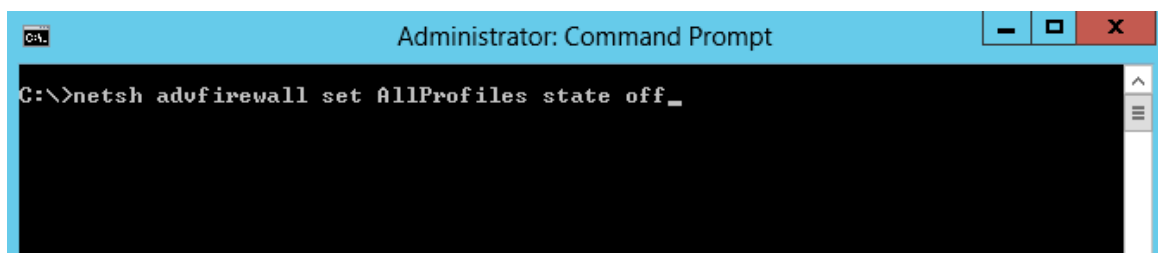
Driver & Software Installation

Once the GUI Edition is installed, please install all device drivers needed in device manager. Install the latest chipset drivers of your motherboard, the latest drivers for your network card, and install all drivers needed for your DAC or DDC and anything else that shows a missing driver in the device manager. **Do not install the 3rd party driver of your video adapter if not absolutely needed.** Many graphic card drivers set system priority in favor for the graphic card. If you really need the graphic cards driver, try to install only the INF files with PnPUtil and not the whole driver package.

How to use PnPUtil: <http://msdn.microsoft.com/en-us/library/windows/hardware/ff550428%28v=vs.85%29.aspx>

Disable Firewall (Optional)

Before you start configuring JPLAY you should disable the Firewall. Open a command prompt and enter:
`netsh advfirewall set AllProfiles state off`



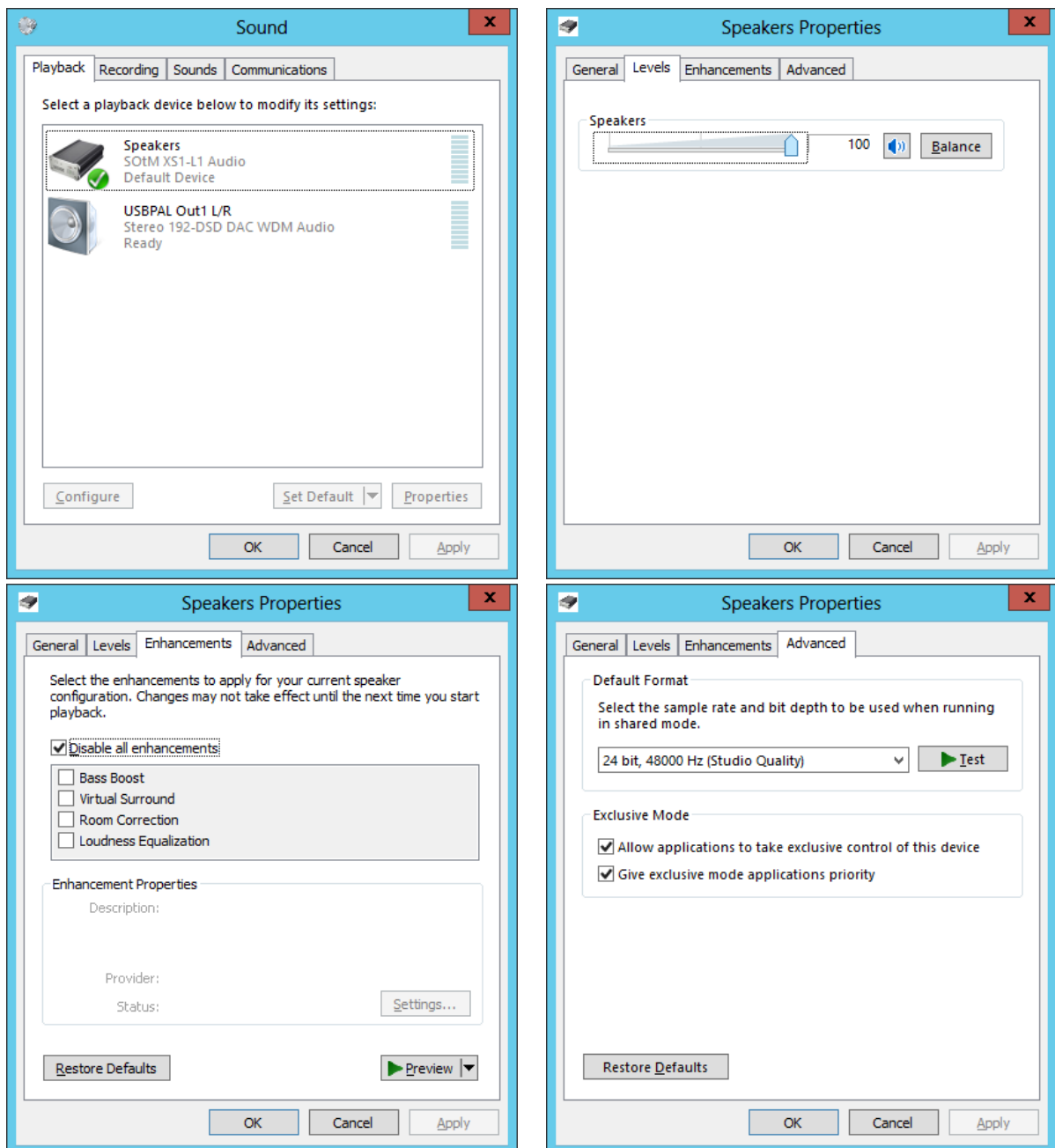
Roon, Hysolid, Bug head Emperor, JPLAYmini, HQPlayer, Foobar2000 & Co.

Once all drivers are setup, install JPLAY (if you plan to use JPLAY) and reboot. On a SinglePC or a ControlPC, also install the music player of your choice. For the very best sound quality we recommend Bug head Emperor or Hysolid. JPLAYmini and HQPlayer work in core mode, but require a tool like Total Commander to choose files for playback. Roon offers the best overall experience and usability.

WASAPI

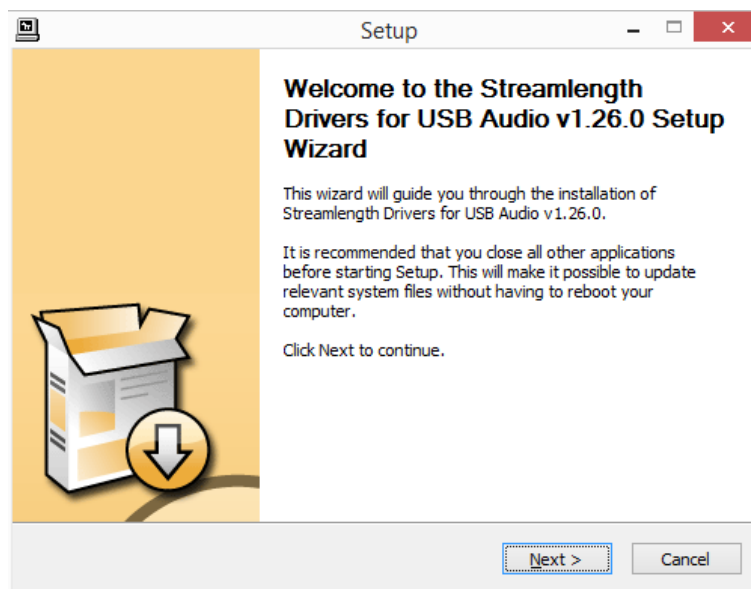
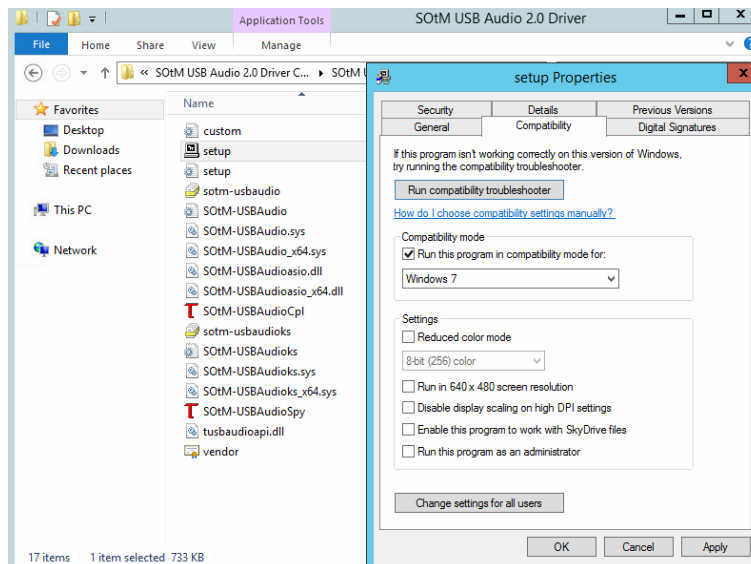
You can skip this section if you don't use WASAPI. WASAPI is supported in minimal-server and GUI mode, but not in core mode. If you have multiple WASAPI capable devices, choose one as your standard sound device. After the conversion to minimal-server edition, you won't be able to switch between different WASAPI devices inside JPLAY settings anymore. **It is very important to set the volume to 100% if your device supports that option.** Also disable all enhancements in the properties of your device. All these settings do not matter if you use ASIO or Kernel-Streaming.

INFO: Every server OS has all windows audio services disabled by default. If you need WASAPI, or your driver is related to WASAPI architecture in any way, you need to set the windows audio services to automatic start.



DAC/DDC Drivers

Most driver vendors do not yet offer DAC/DDC drivers made for Windows Server 2016. Drivers made for Windows 8 or Windows 10 will work without any issues since Windows 8/8.1 and Server 2016 share the same binaries in wide areas. If no driver for Windows 10 available, you will have to use the Windows 8 driver. Sometimes the compatibility mode is needed to install a Windows 8 driver on Windows Server 2016. You can use the Driver Helper function of ServiceTool to install such drivers



ATTENTION: If you still encounter problems during driver installation, start a command prompt and run "install.cmd" found here: <https://www.highend-audiopc.com/Drivers/install.rar>. From the same command prompt window, start the setup.exe of your DAC/DDC driver and install its drivers. Run finish.cmd after you've finished the installation.

Converting Evaluation to Retail Edition

If you have installed the evaluation or trial edition of Windows Server 2016, you can convert it to a retail edition before you activate it by using the key you receive when you purchase Windows Server 2016. Use this command (in command prompt, not PowerShell) to convert the trial edition:

```
DISM /online /Set-Edition:ServerStandard /ProductKey:XXXXX-XXXXX-XXXXX-XXXXX-XXXXX /AcceptEula
```

NOTE: You need to replace XXXXX-XXXXX-XXXXX-XXXXX-XXXXX with a legit Windows Key!

More information: <http://technet.microsoft.com/en-us/library/dn303416.aspx>

OS Activation

If you have installed a retail version, you can enter the Key and activate your copy via sconfig. You can also activate the core edition with these commands:

1. Enter Product key: `slmgr.vbs -ipk XXXXX-XXXXX-XXXXX-XXXXX-XXXXX`
2. Activation: `slmgr.vbs -ato`

Remember, you need an active and working internet connection for the online activation. So, you may have to reconfigure your network settings and connect your AudioPC to your internal LAN one last time.

ATTENTION: You can also activate your copy of Windows Server 2016 via telephone. Enter "slui.exe 4" in the command prompt to start the telephone activation wizard. This works only in GUI mode.

If you are using the TRIAL/Evaluation edition and do not activate your copy online, your system will start to shut itself down when idle.

Highend-AudioPC Shop

Please visit our Highend-AudioPC shop, especially made for computer audiophile enthusiasts. Here you can find carefully selected computer audiophile products from [MUTEC](#), [SotM-Audio](#), [Pachanko Studio](#), [VOVOX](#), [JCAT](#), [JPLAY](#), [Fidelizer Audio](#) and others.

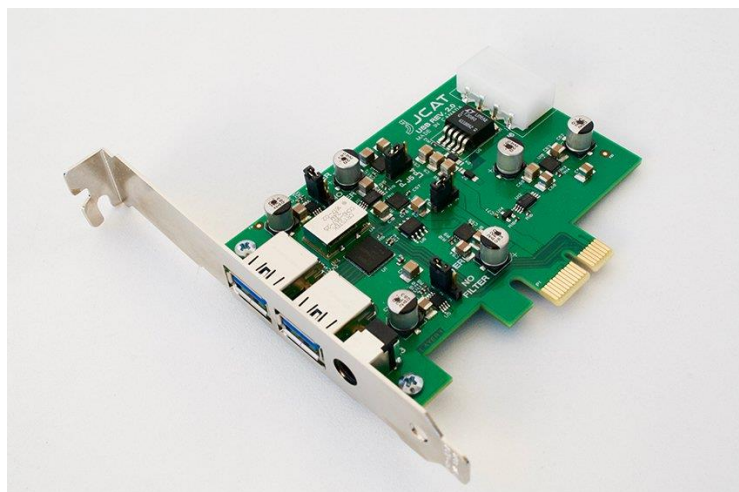
Should you want to order a product not listed in our shop, need technical assistance or have any questions, please **don't hesitate to contact us** via e-mail to shop@highend-audiopc.com. We are very confident that we will find the perfect solution for your setup.

MUTEC Smart Clock MC-3+ USB

Digital Audio Master Clock, 1G Audio Re-Clocker & USB Interface



<https://shop.highend-audiopc.com/en/ddc/mutec-mc-3-smart-clock-usb>



JCAT USB Card FEMTO



JCAT Reference LAN Cable



JCAT Reference USB Cable



**SOtM dx-USB HD
USB/AES Converter**



SOtM tx-USBhubEx (external)



SOtM iSO-CAT6 LAN Isolator